

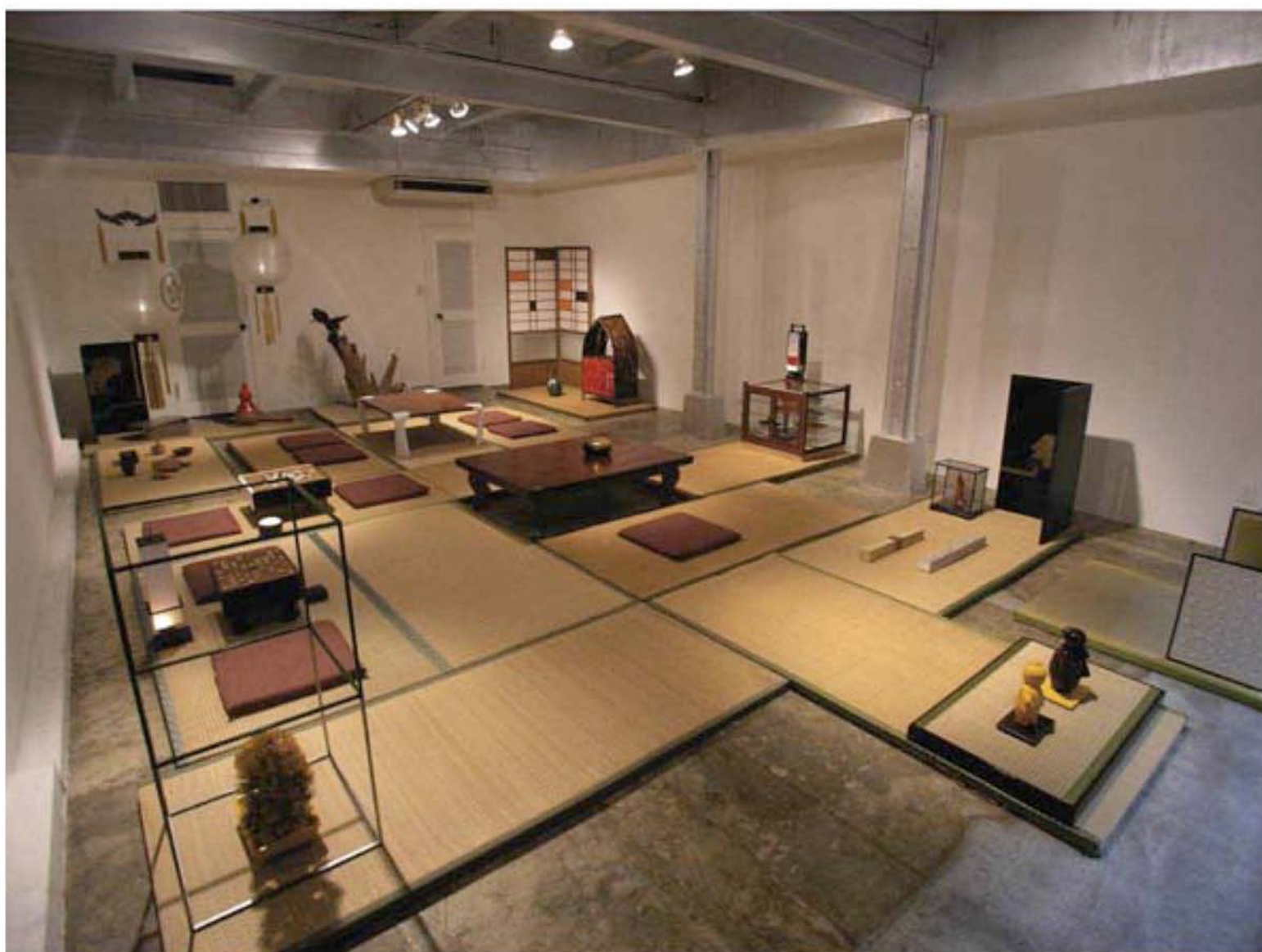
'The white collection'

During my residence in Beppu, I asked 30 shop owners to give me an object that needed to be restored. I give them back after painting it in white.

Curator: Nov Amenomori.

Beppu project, Japan 2010.





' Japanese style '
Platform 02, Beppu (Japan)
Group show, Beppu Project 2010.
Curator: Nov Amenomori



'1 + 1 = 3'

Group show. Collaboration with Kahla company, 2010.
250 unique pieces founded in the garbage of the company. Produced by Kahla.
Curator: Katia Baudin-Reneau.
Porzellanikon Museum, Selb (G).





' FAKE '

Group show, Aalst (B), 2010
Painted Plastic Plant Company (P.P.P.)
Curator: Jan de Nys

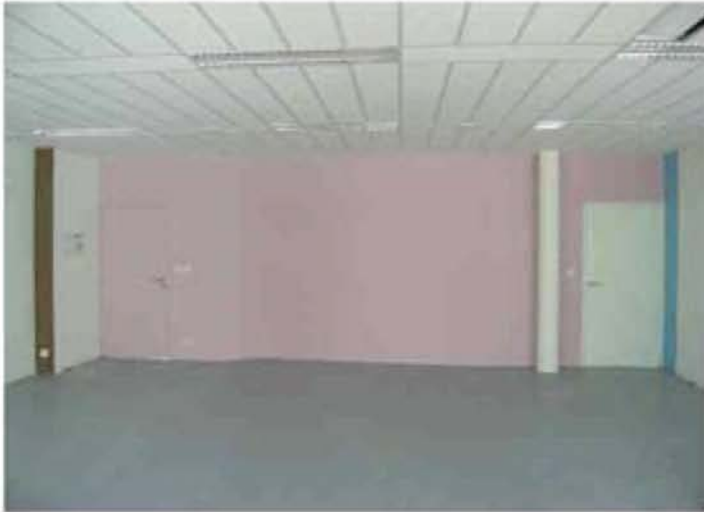
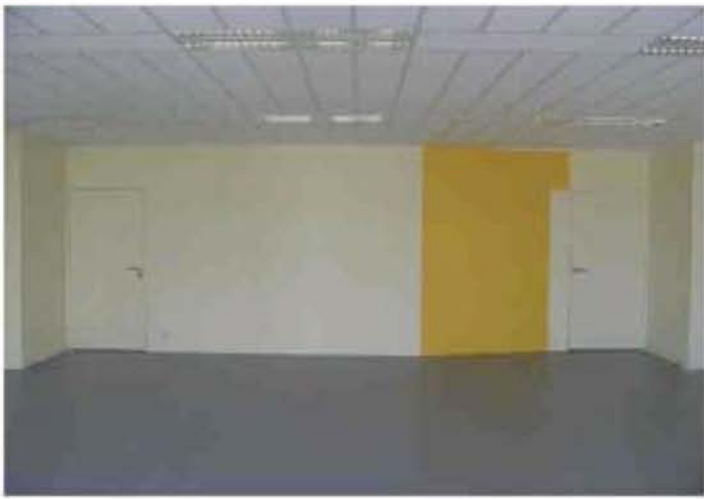


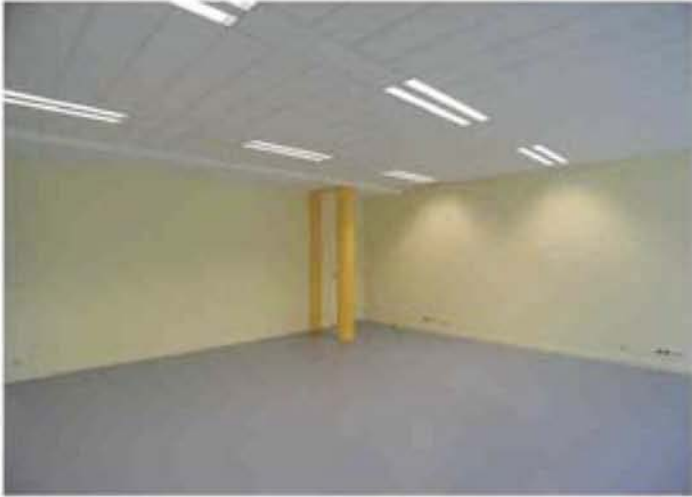
' The College '

Public Commission Collège Pré-Gauchet, Nantes (France)

Collaboration with Carole Rivalin.

2010











' The Showroom '

D. Nobili office

Paris 2010.



‘ VALUES ’

Group show ‘ Frei nach Malerei ’, Künstlerhaus Dortmund
Curator: Willi Otremba & Elly Valk-Verheijen
2010, Dortmund (G)



'Thanatocoeconomia , The Ephemeral Monument '
Collaboration with Simon Artignan (F)
'Pods ' group show, Fundament Foundation, Tilburg 2010 (NL)



' Slovenian style'

Painting Performance in situ

Utopias of the everyday, Triennial of small-scale sculpture

Curator: Katia Baudin

Morska Sobota Galerija, Morska Sobota (Slo), 2010